

ColorVu IP Cameras-

How to adjust white light settings

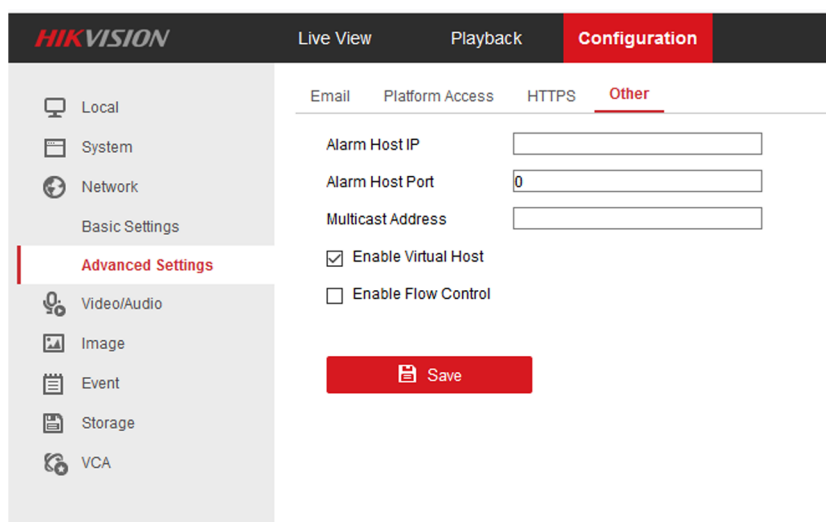
Hikvision's ColorVu range of cameras has been very popular recently and one of the questions that we get asked often is "How do I adjust the brightness of the white light?". With the IP range of colorvu cameras not only can you adjust the brightness of the white light but you can also turn it off altogether or adjust the way in which the light turns on. The light can be set to turn on automatically when the light level drops (sensitivity and Filtering time can be used to make adjustments here), or a schedule can be set so that the light only comes on between specified hours.

To make adjustments to these light settings we must log into the camera directly.

For our example we will assume the camera is connected to an NVR and use the 'virtual host' method to connect to the camera. If instead, your camera is accessible on your local network then you should be able to log into the camera directly by using its IP address and http port.

To Enable Virtual Host within the NVR-

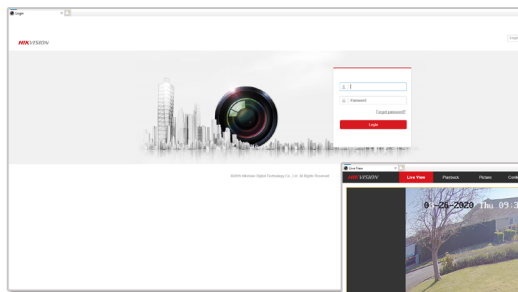
- Log in to your NVR through your browser (internet explorer recommended).
- Go to Configuration> Network> Advanced settings
- Select other and tick Enable Virtual Host, click save



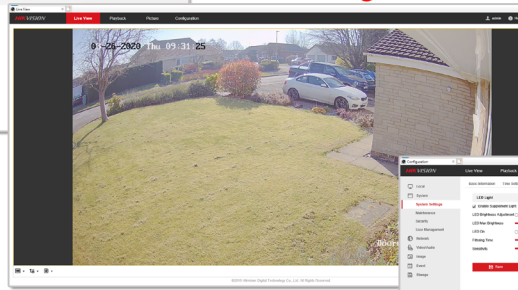
Now Virtual Host is enabled you are able to connect directly to your cameras through your NVR.

- Go to System > Camera management
- On the right handside in the Connect column you should see some html links
- Click the link for the camera you would like to access
- Input the login details for the camera
- You should now see the log inscreen for the camera.
- Log in using the camera's password. *Note this may be different to the NVR password, but typically is the same for a plug 'n play system.

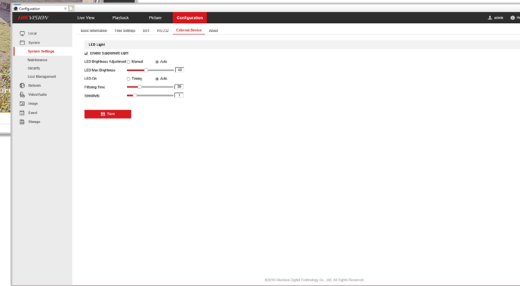
Camera - Log in



Click configuration



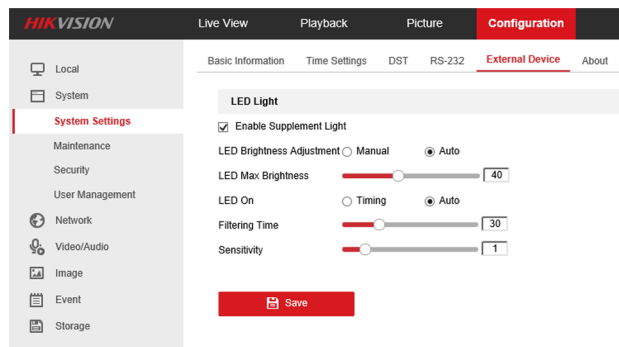
Click - External Device



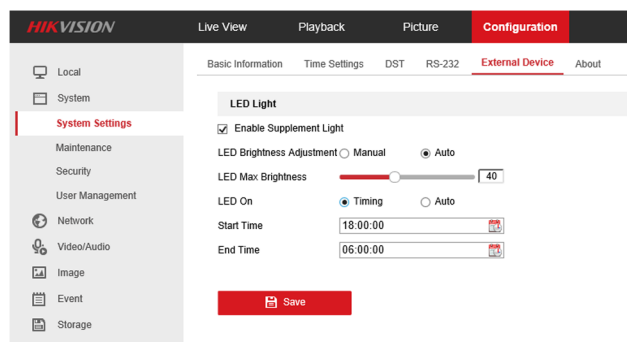
Now to access your White light settings

- Select Configuration
- Got to System then System Settings
- Select External Device
- From here you can enable, disable, adjust brightness or setup a schedule

Example below: The White Light LED Automatically comes on when ambient light level drops:



Example below: The White Light LED comes on with a defined time schedule.



Adjust your White light settings as required and remember to click save. Note: the white light can also be set to adjust its own brightness (you set a maximum brightness) or it can be manually set (in which case you set a constant brightness for the LED).