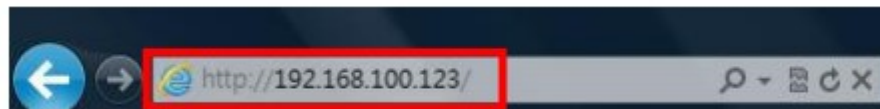


The DVR allows user's access and control to the DVR from a PC by

iWatchDVR app or Internet Explorer web browser

Step 1 : Enter the IP address of DVR in IE browser.



Step 2 : Windows as below will show up. Please enter the user name and password. Default user name and password is admin/123456 or if this has been changed within the cctv system, enter login details.



Step 3 : Click on the link "iWatchDVR for Windows XP/Vista/7" to start downloading the AP software.

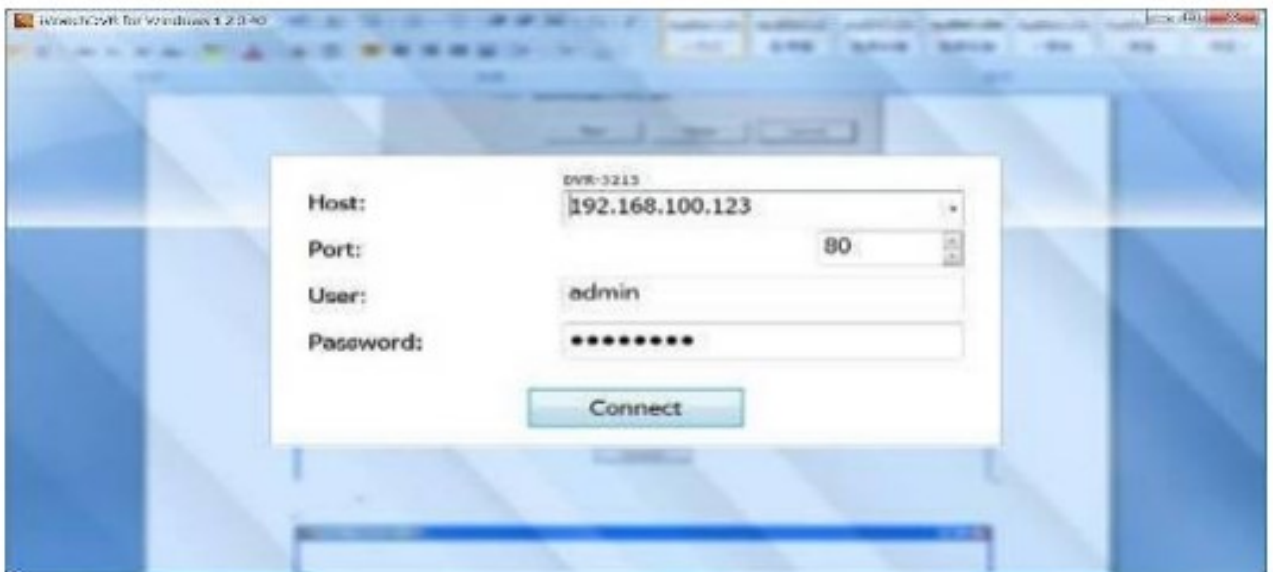


Step 4 : The program can be run directly, or save the program to the remote PC and execute later. If you choose to run the software, Start window will be shown up.



Step 5: Please enter information of login DVR:

- Host - (IP Address of the DVR)
- Port – (HTTP PORT – network setup setting)
- Username and Password.



Step 6 : You've logged into the DVR

