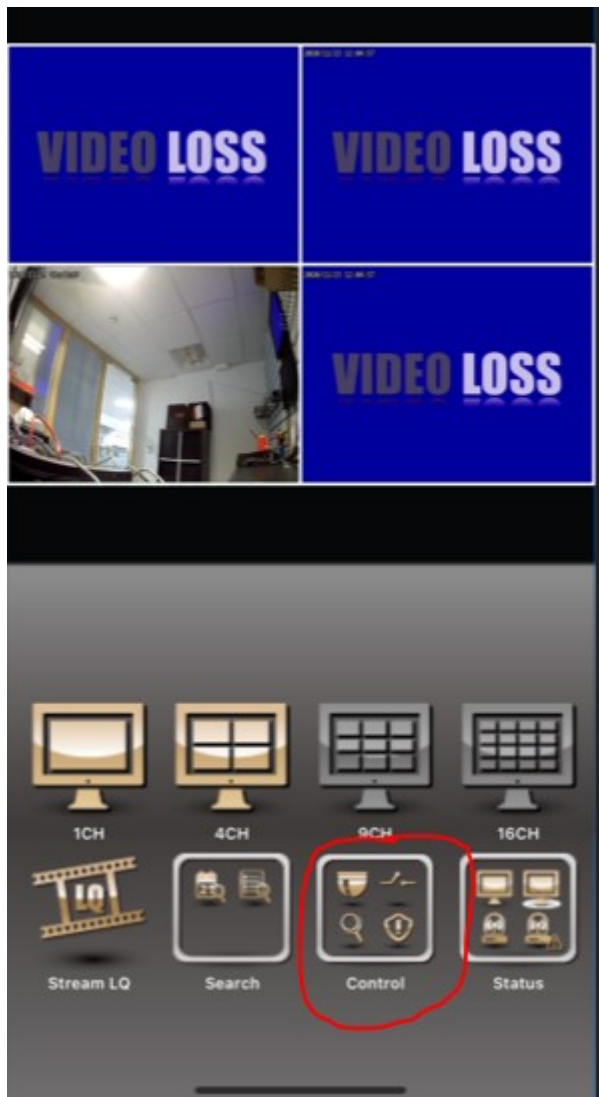
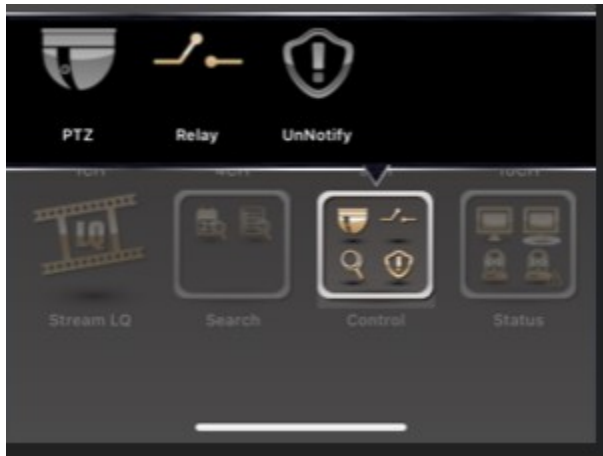


How to Setup Motion detection Alerts on a PRO-VIEW DVR

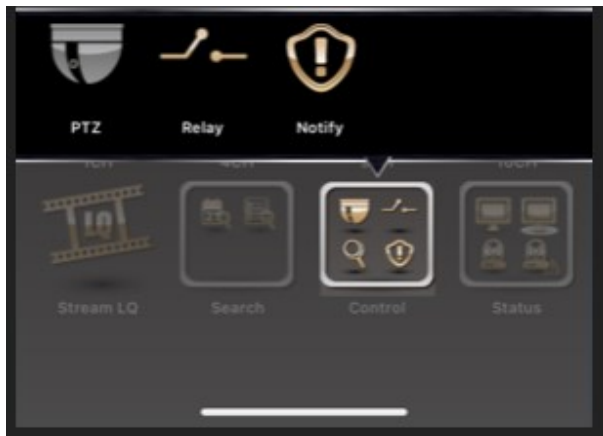
1. First you need you enable Notification's on the SoCatch app
2. With the PRO-VIEW system setup within the app, Select the Control option from within the app



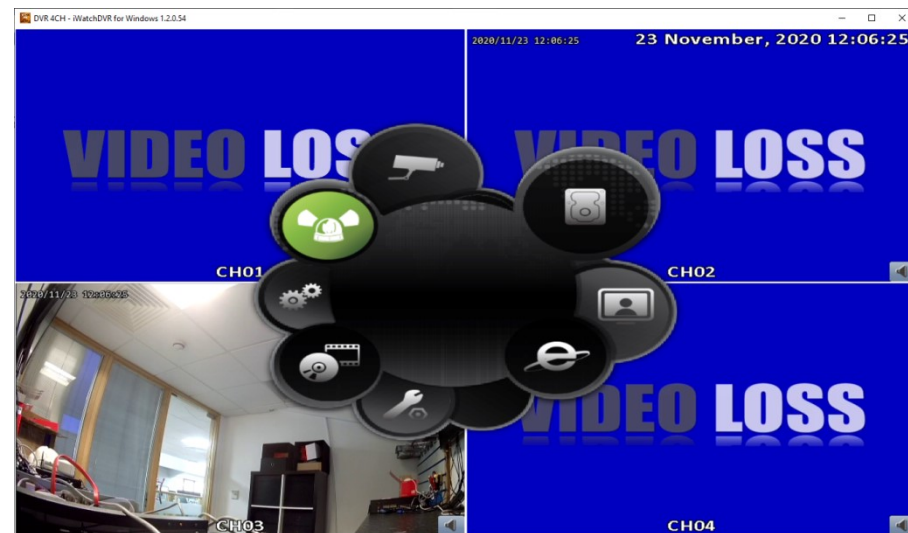
- 3.
4. You need to change from UnNotify to **Notify**



- 5.
6. With **Notify (gold icon)** now selected, notifications will now be enabled in the SoCatch app



- 7.
8. You now need to enabled Motion Detection on Camera/Camera's from with the PRO-VIEW DVR
9. Select Event Setup



- 10.
11. Select **Motion Detection** in the top left screen option
 - a. Select the Channel (camera's you want to enable) ie- CH03
 - b. Notification – tick on camera's you want notifications enabled

12.

	CH01	CH02	CH03	CH04
Motion Detection				
Setup				
Enable	<input type="checkbox"/>	<input type="checkbox"/>	<input checked="" type="checkbox"/>	<input type="checkbox"/>
Motion Area	Setup	Setup	Setup	Setup
Notification	<input type="checkbox"/>	<input type="checkbox"/>	<input checked="" type="checkbox"/>	<input type="checkbox"/>
Event Handler				
Log	<input checked="" type="checkbox"/>	<input checked="" type="checkbox"/>	<input checked="" type="checkbox"/>	<input checked="" type="checkbox"/>
Event Record	CH01	CH02	CH03	CH04
Popup	Disable	Disable	Disable	Disable
Popup Channel	CH01	CH02	CH03	CH04
Buzzer	<input type="checkbox"/>	<input type="checkbox"/>	<input type="checkbox"/>	<input type="checkbox"/>
Relay	Disable	Disable	Disable	Disable
PTZ	Disable	Disable	Disable	Disable
Go Preset	1 0	1 0	1 0	1 0
Resume Preset	1 0	1 0	1 0	1 0
Mail to	Receiver Setup...		Notification Setup...	
OK Cancel				

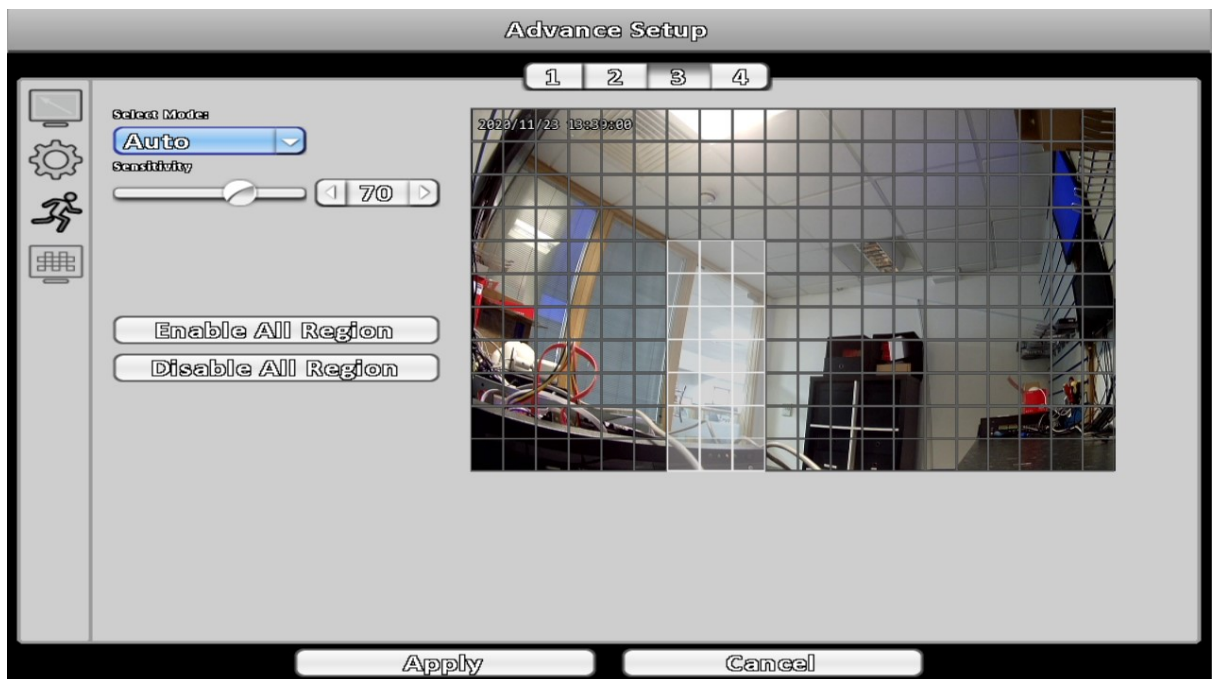
13. Now click on the **Setup** option

	CH01	CH02	CH03	CH04
Motion Detection				
Setup				
Enable	<input type="checkbox"/>	<input type="checkbox"/>	<input checked="" type="checkbox"/>	<input type="checkbox"/>
Motion Area	Setup	Setup	Setup	Setup
Notification	<input type="checkbox"/>	<input type="checkbox"/>	<input checked="" type="checkbox"/>	<input type="checkbox"/>
Event Handler				
Log	<input checked="" type="checkbox"/>	<input checked="" type="checkbox"/>	<input checked="" type="checkbox"/>	<input checked="" type="checkbox"/>
Event Record	CH01	CH02	CH03	CH04
Popup	Disable	Disable	Disable	Disable
Popup Channel	CH01	CH02	CH03	CH04
Buzzer	<input type="checkbox"/>	<input type="checkbox"/>	<input type="checkbox"/>	<input type="checkbox"/>
Relay	Disable	Disable	Disable	Disable
PTZ	Disable	Disable	Disable	Disable
Go Preset	1 0	1 0	1 0	1 0
Resume Preset	1 0	1 0	1 0	1 0
Mail to	Receiver Setup...		Notification Setup...	
OK Cancel				

14. You can now set motion detection

- You can setup motion detection for the whole camera viewing area.
- You can also setup motion detection are for just set area, to do this select **Disable All Region** and **Draw the area detection** as in the example given below.

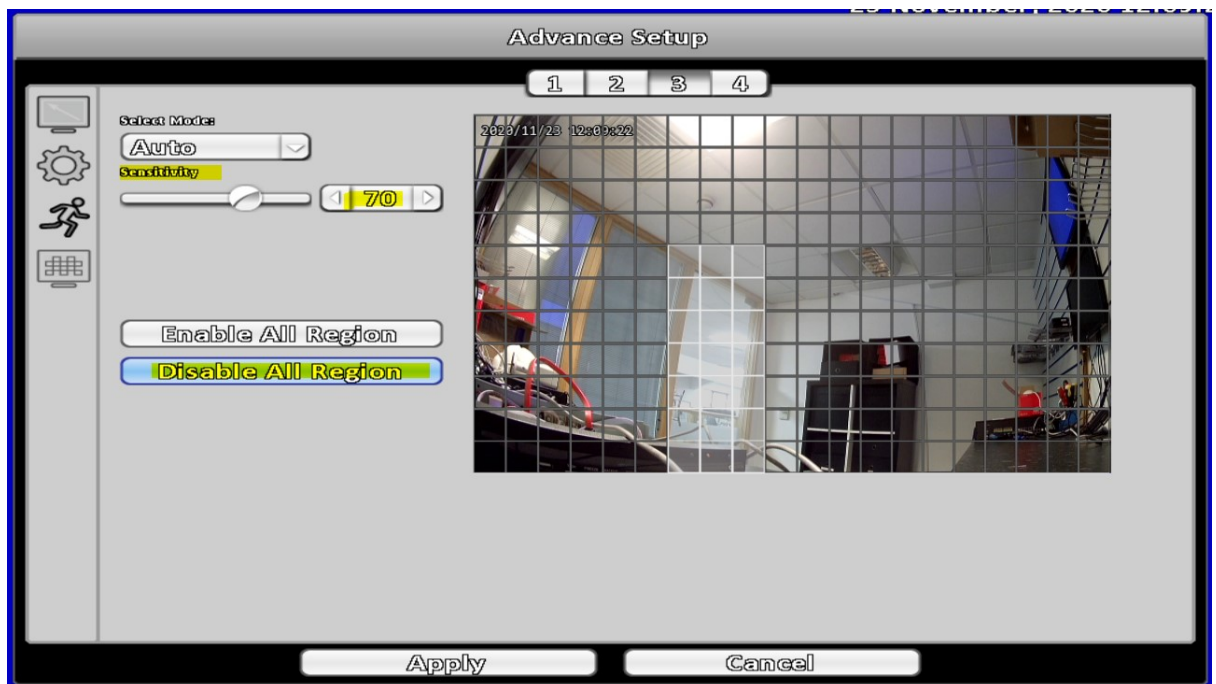
15.



16. You can also set the Motion Detection Sensitivity

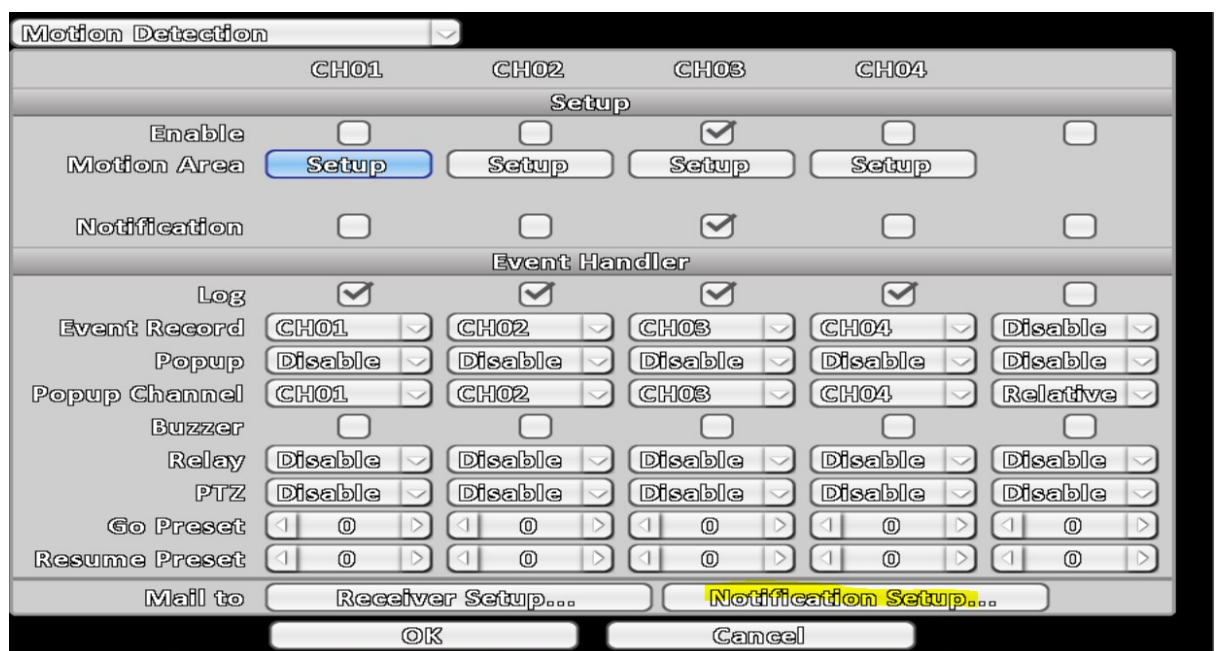
- a. The default is 70
- b. If the sensitivity are set to high and you start receiving too many notification alerts caused by false motion alerts from the camera you can try adjusting the Sensitivity Alerts settings
- c. Click Apply to save any changes

17.

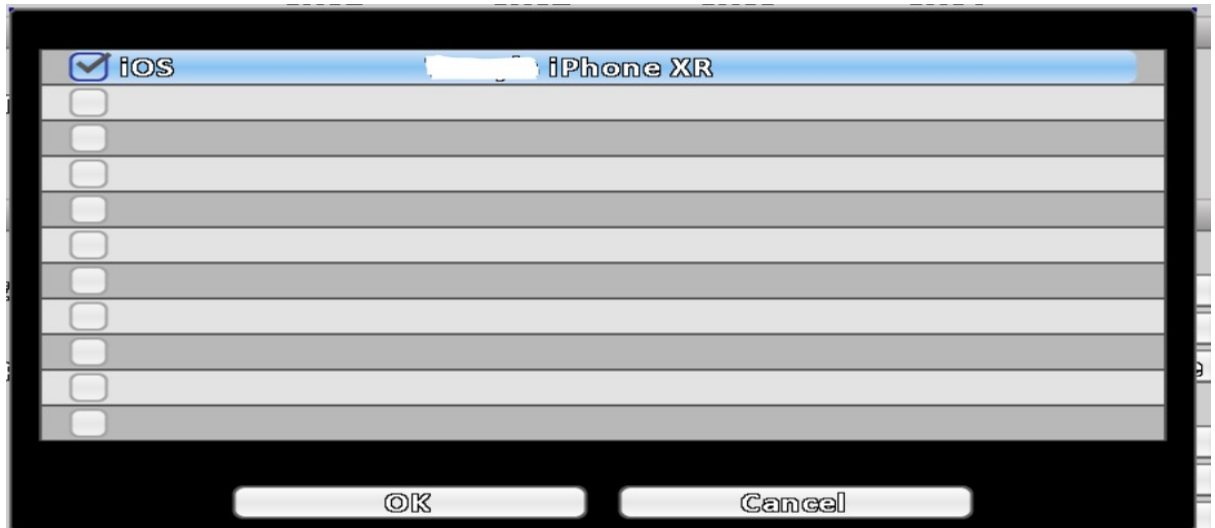


18. Now click **Notification Setup**

19.



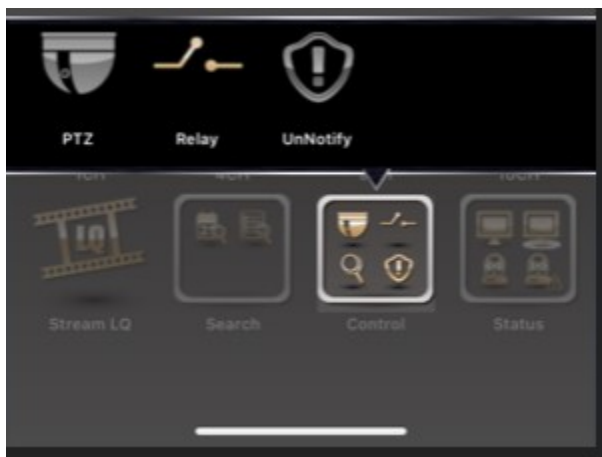
20. You can view mobile devices that are set to receive notification alerts



21.

22. Click Ok and test camera motion detection alerts are received on your mobile device from the SoCatch app

23. You can turn off notification alerts from the SoCatch app by clicking on the UnNotify option from the control menu from within the app



24.