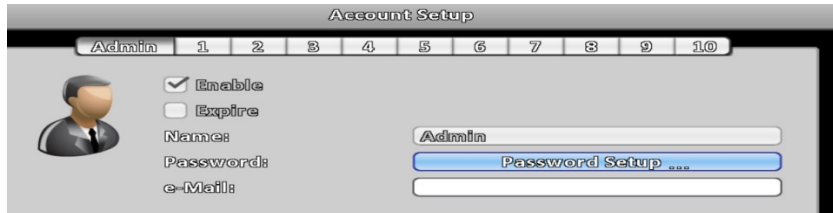
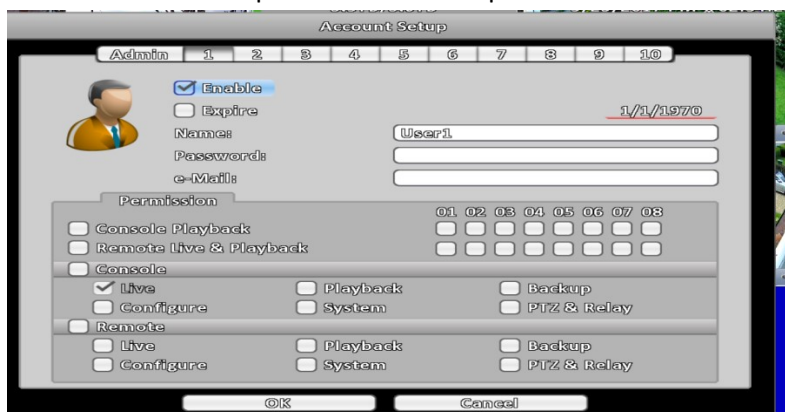


User account guide

- 1) Log in to the DVR using iWatchDVR. Right click on the screen and click on "Configure" and then "Account Setup".
- 2) To change the default password (123456) for the admin account, click on "Password Setup".



- 3) On this screen, put in the current password and then your new password. Upon clicking OK, your password will now be changed and you will have to edit any saved information you may have on mobile devices with the new password.
- 4) Alternatively to this, you can also set up user accounts with limited privileges. To do so, once on the "Account setup" screen. At the top click on "1".



- 5) Click enable and enter the details you wish the user to log in with. For example, the name can be "Joe" and the password "12345". When trying to access the DVR, they will log in using these details instead of Admin // 123456.
- 6) Below you can configure what they are allowed to view and edit if you want them to have limited access.