

Accessing WiFi NVR through Internet Explorer

- 1) Locate the NVR IP address (Right click > Menu > Network > WAN)

You should see the below details (Example)

IP Address: 79.135.117.160

Netmask: 255.255.255.0

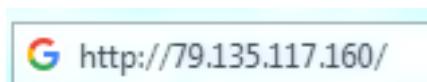
Gateway: 79.135.117.199

DNS: 8.8.8.8

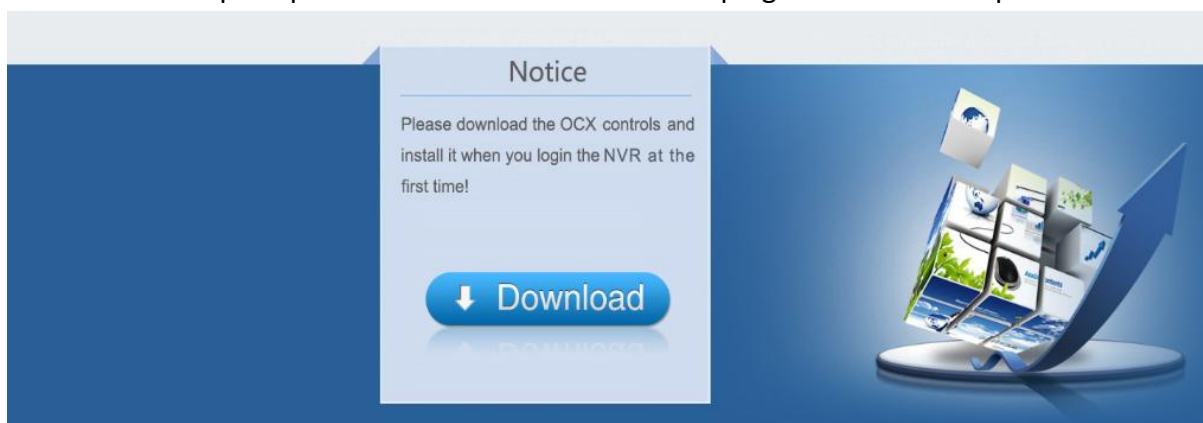
Secondary DNS: 8.8.4.4

- 2) On a computer, open Internet Explorer. This can be done by pressing the windows key, then opening "run" (Windows key + R). Once Run is open, type "iexplore" then click "OK"

- 3) In the address bar at the top, enter the IP Address and search

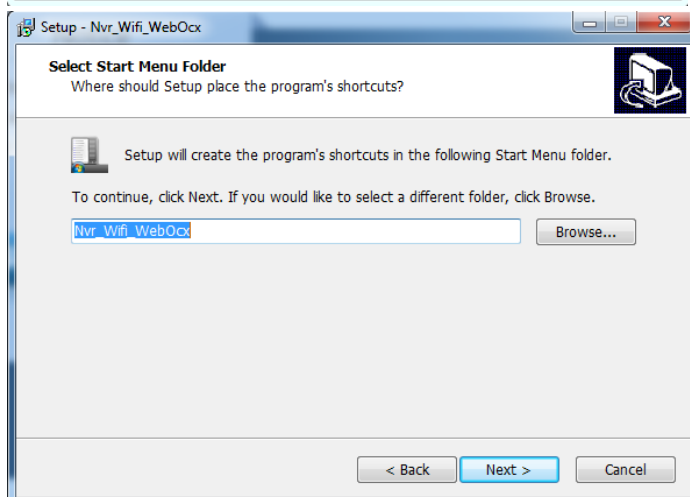
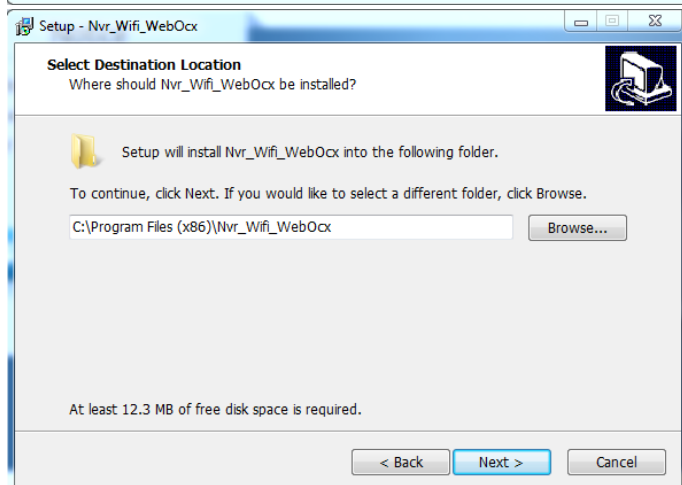
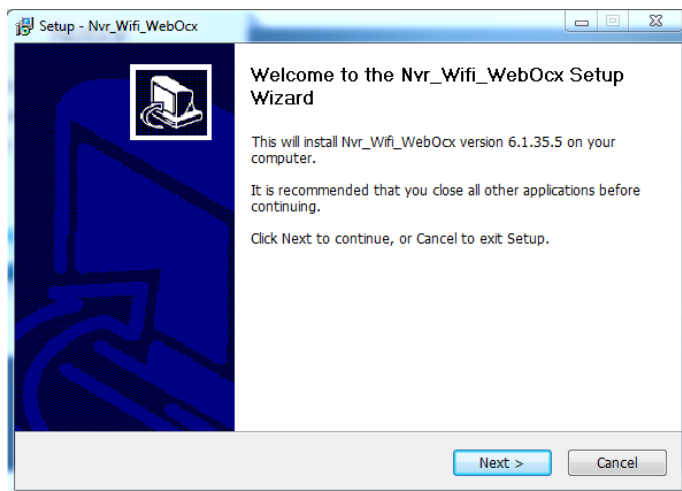


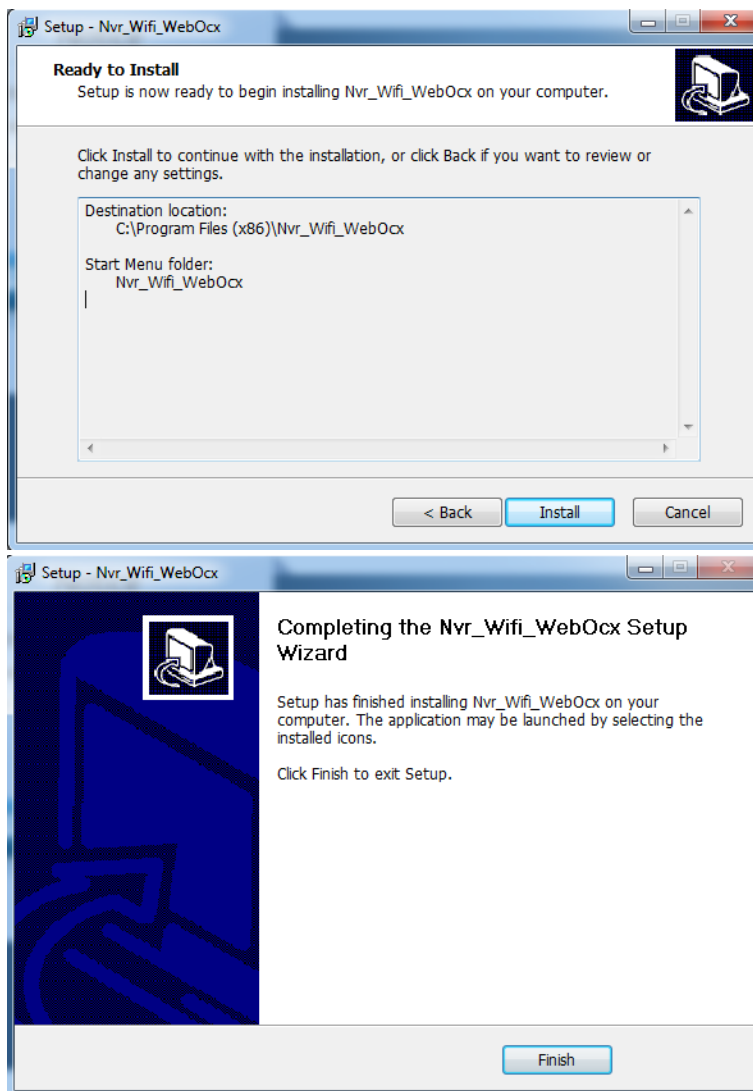
- 4) You will then be prompted to download and install the plugin for internet explorer



Click Download and then run at the bottom and accept any security prompts that may appear on screen. Now run through the installation.

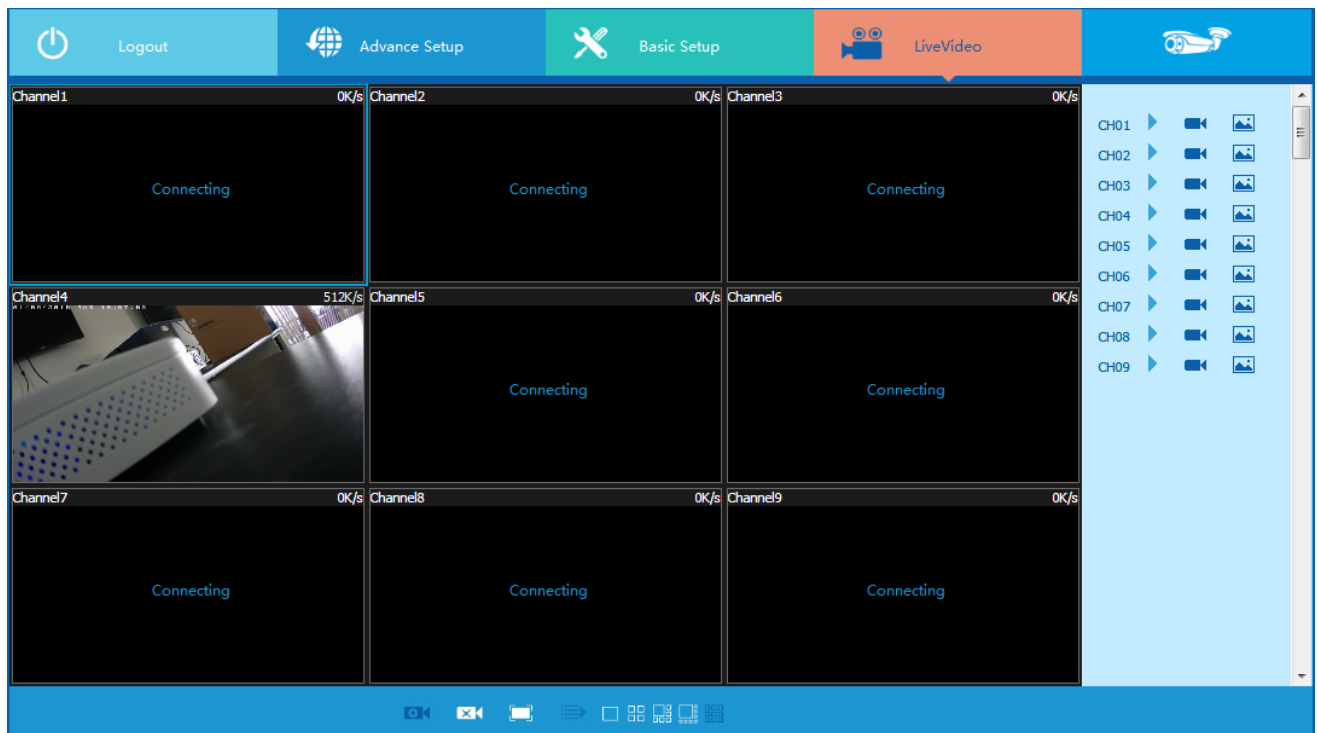






- 5) Once this has been installed, refresh the page / search the IP address again and you will be prompted with a login screen. Enter the NVR credentials and login.
Default are: Username: admin // Password: 12345

The image shows the NVR Login screen. It features a blue header with the text 'NVR Login' and an icon of three people. Below the header, there are input fields for 'User Name' (containing 'admin'), 'Password' (containing '*****'), and 'Language' (set to 'English'). There are also checkboxes for 'Remember Me' and 'All Channel'. At the bottom, there are 'Login' and 'Reset' buttons. A large padlock icon is positioned on the right side of the screen.



To start the camera live view, use the icon on the bottom toolbar to the left.