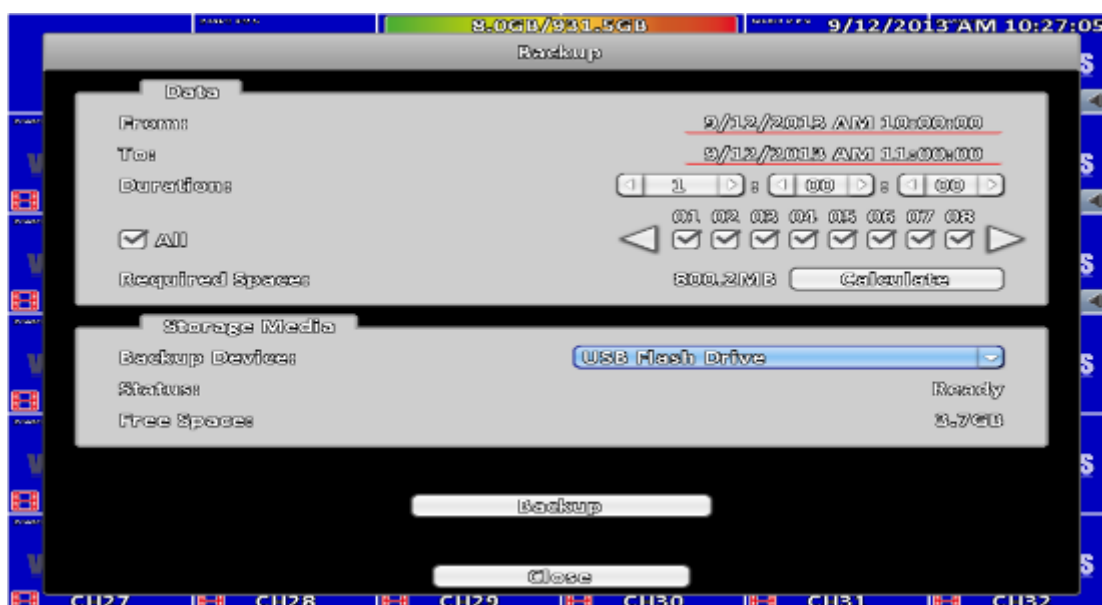


2-2 Backup

User can backup recorded video data of a specified time frame. The DVR can backup video data to either direct-attached storage, such as DVR or USB drive, or remote folder of a PC.

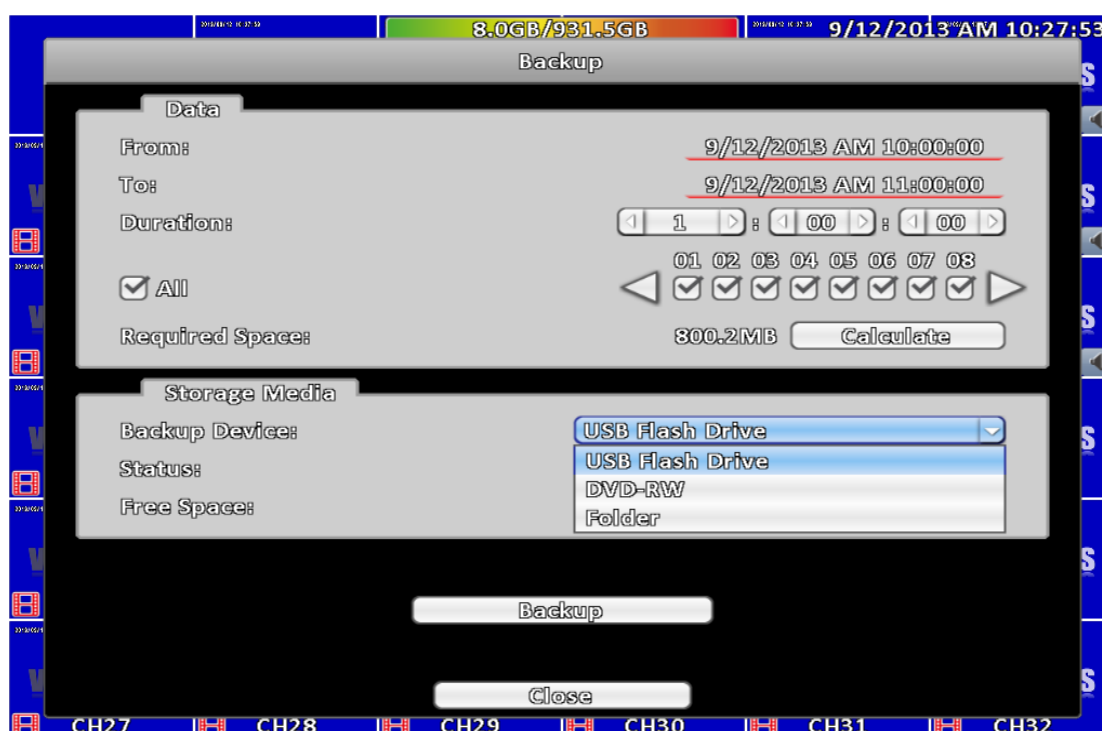
2-2.1 Selection

Item	Description
From	The start time of video data to be backed up
To	The end time of video data to be backed up
Duration	The time duration of backup file
All	It can select all channels or clear all selected channels to backup
Required Space	Show the size of the backup file



2-2.2 Select Backup Device

Item	Description
Backup Device	Select target device of backup (USB/DVD-RW/remote folder) °
Status	The status of target backup device
Free Space	The available space in the target backup device. (not available for remote folder backup)
Backup	Start backup operation. Be sure to calculate the size of backup file BEFORE operating backup.



Do not unplug the USB device or turn off the DVR during the backup process to avoid unrecoverable error.