



How to configure Hikvision LPR Function via NVR

1 Purpose

Vehicle Detection is available for the road traffic monitoring. In Vehicle Detection, the passed vehicle can be detected and the picture of its license plate can be captured. You can send alarm signal to notify the surveillance center and upload the captured picture to FTP server.

Note: *Road traffic function varies according to different camera models. And, Mixed-traffic Detection (detecting pedestrian, non-motor vehicle and motor vehicle) is also available for some certain regions.*

2 Vehicle Detection Configuration via NVR

2.1 Vehicle Configuration via web

2.1.1 Detection configuration

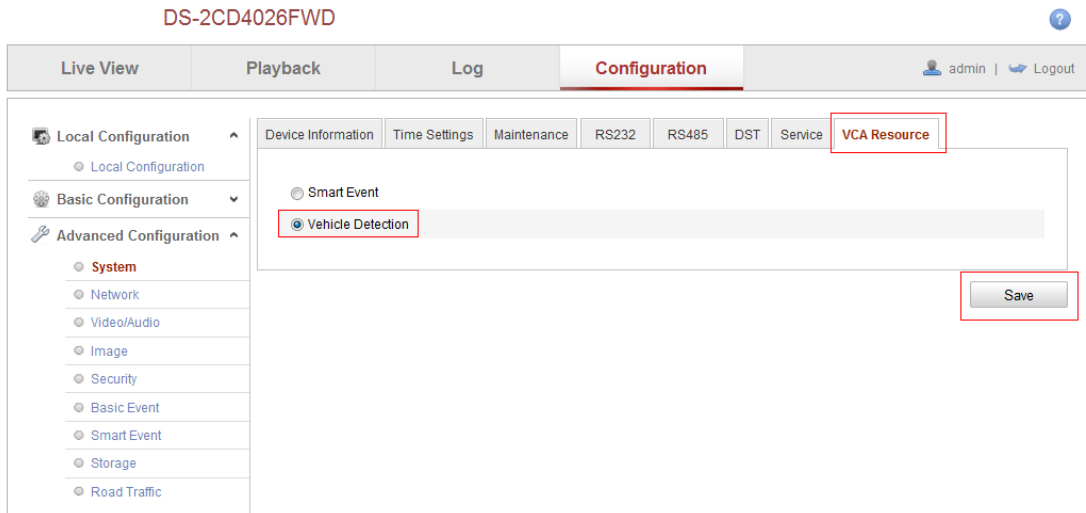
Connect to camera via any appropriate WEB browser and login to camera using the appropriate administrative account.

1. Upgrade the firmware to the specific firmware . The camera has to be connected to local network.
2. VCA resource can be efficiently allocated to get a better performance. Two modes of VCA resource allocation are supported: Smart Event and Vehicle Detection.

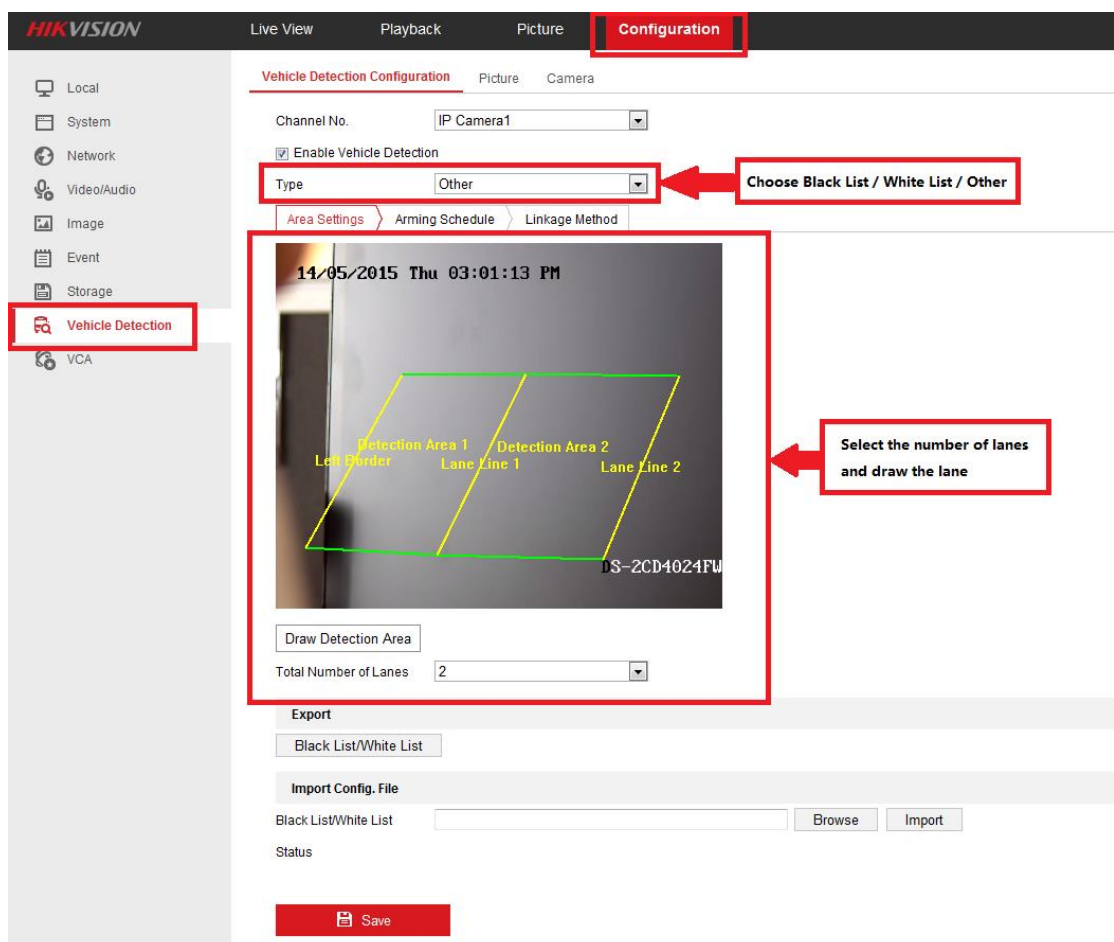
Go to **Configuration->Advanced Configuration->System ->VCA Resource**

Select **Vehicle Detection** for the VCA resource allocation. Reboot the device to activate the new settings.

Note: *When Smart Event is enabled, the Vehicle Detection function is disabled; When the Vehicle Detection is enabled, high frame rate, recording on SD card or NAS / CIFS, some certain smart events (for the details, see the actual operation interface) and people counting (non-iDS) are limited.*



3. Then login to NVR and go to **Vehicle Detection** option. Select the detection type from the list.



4. Enable the selected detection function. Then select the lane number in the corresponding dropdown list. Up to 4 lanes are selectable.
5. Click and drag the lane line to set its position, or click and drag the line end to adjust the length and angle of the line.

Note:

Only 1 license plate can be captured at one time for each lane.

- Set the Arming Schedule for Vehicle Detection. To edit the arming schedule, click **Arming Schedule** button.

Area Settings

Arming Schedule

Linkage Method

✖ Delete

🗑 Delete All

Copy to...

☒ Mon
 ☐ Tue
 ☐ Wed
 ☐ Thu
 ☐ Fri
 ☐ Sat
 ☐ Sun

OK Cancel

Mon	0 2 4 6 8 10 12 14
Tue	0 2 4 6 8 10 12 14
Wed	0 2 4 6 8 10 12 14
Thu	0 2 4 6 8 10 12 14 16 18 20 22 24
Fri	0 2 4 6 8 10 12 14 16 18 20 22 24
Sat	0 2 4 6 8 10 12 14 16 18 20 22 24
Sun	0 2 4 6 8 10 12 14 16 18 20 22 24
Holiday	

Note:

The time of each period cannot be overlapped.

- Check the checkbox to select the linkage method.

Area Settings

Arming Schedule

Linkage Method

<input type="checkbox"/> Normal Linkage <input type="checkbox"/> Audible Warning <input type="checkbox"/> Send Email <input type="checkbox"/> Notify Surveillance Center <input type="checkbox"/> Full Screen Monitoring	<input type="checkbox"/> Trigger Alarm Output <input type="checkbox"/> A->1 <input type="checkbox"/> A->2 <input type="checkbox"/> A->3 <input type="checkbox"/> A->4 <input type="checkbox"/> D1->1	<input type="checkbox"/> Trigger Channel <input checked="" type="checkbox"/> D1 <input type="checkbox"/> D3
--	---	---

Notify Surveillance Center:

Send an exception or alarm signal to remote management software when an event occurs.

- Click the **Save** button to activate the settings.

2.1.2 Upload picture Configuration

1. Set the picture quality

Either Picture Quality or Picture Size can be set to specify the picture quality.

2. **(Optional)** Enable and edit the text overlay on the uploaded picture.

You can set the font color and background color, and click the desired color in the popup palette.

3. Select the information for the text overlay, including **camera No.**, **camera info**, **device No.**, **capture time**, **plate No.**, etc. You can also click the up and down direction buttons to adjust the sequence of the text.

4. Click **Save** to save the settings.


Vehicle Detection Configuration **Picture** Camera


Channel No.

☒ Picture Quality 80

☐ Picture Size

☒ Compose


Font Color 

Background Color 

Text Overlay

☒ Device No. ☒ Capture Time ☐ Vehicle Type ☒ Plate No. ☒ Camera Info. ☒ Camera No. ☐ Vehicle Color

Type	Sorting
Camera No.	↑ ↓
Device No.	↑ ↓
Camera Info.	↑ ↓
Capture Time	↑ ↓
Plate No.	↑ ↓

 Save

2.1.3 Overlay Content Configuration

1. Edit the content of the **camera No.**, **camera information** and **device information** in the corresponding text filed.

(Optional) Enable and edit the text overlay on the picture to upload.

2. Click the **Save** button to activate the settings.

Vehicle Detection Configuration
Picture
Camera

Channel No.
IP Camera1

Device No.
Camera 01

Camera No.
33

Camera Info.
11

Save

2.2 LPR Configuration on local NVR

2.2.1 Add device

Go to **Menu->Camera**, add the camera into the NVR as follows.

Camera Management

Camera
Analog
IP Camera
IP Camera Import/Export

Add IP Camera (Custom)

No.	IP Address	Amount of...	Device M...	Protocol	Manag...
1	10.18.0.102	1	IPC	SONET	80
2	10.18.0.109	1	IPC	ACTI	80
3	10.18.0.114	1	DS-6601...	HIKVISION	8000

IP Camera Address
10.18.0.114

Protocol
HIKVISION

Management Port
8000

Transfer Protocol
Auto

User Name
admin

Admin Password

☒ Continue to Add

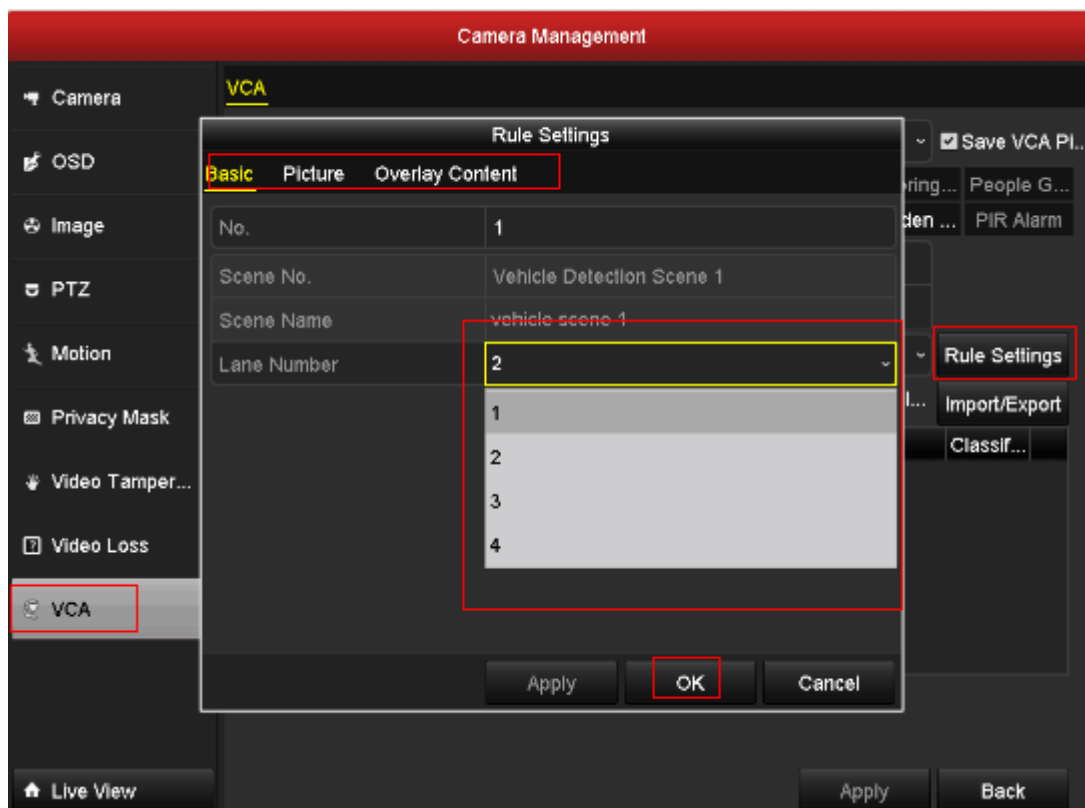
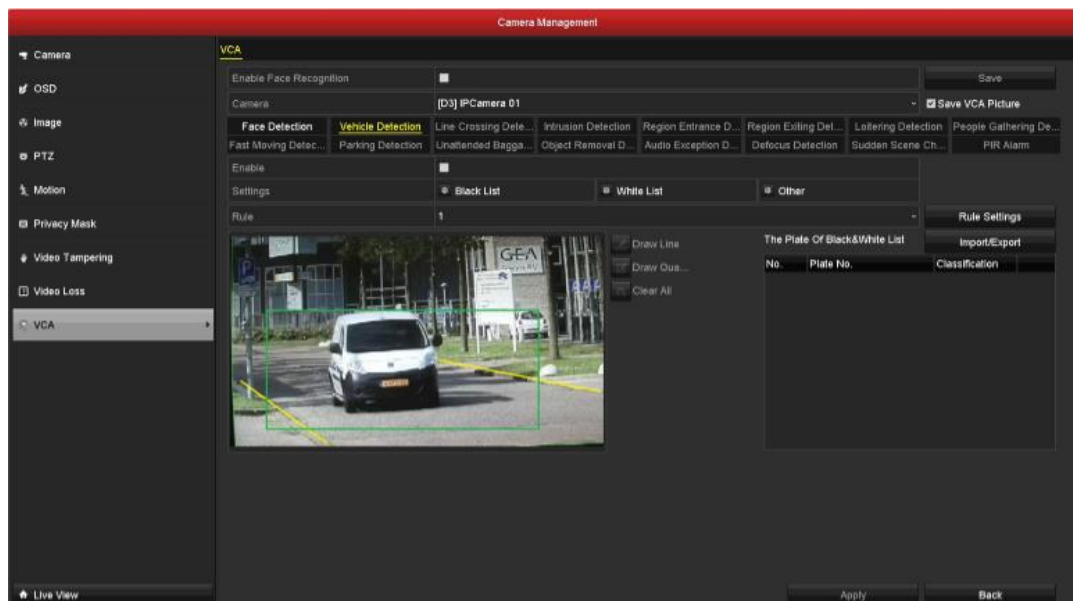
Protocol
Search
Add
Back

Custom Addi...

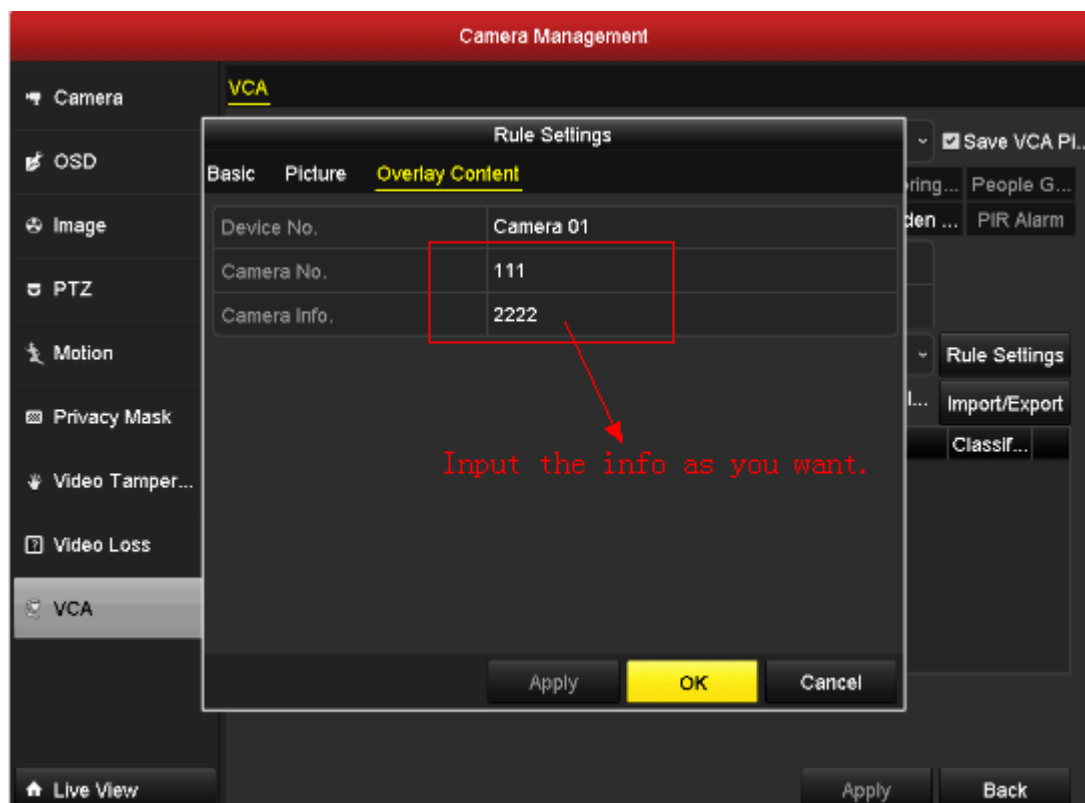
Live View
Net Receive Idle Bandwidth: 95Mbps
Back

2.2.2 LPR Configuration on Local NVR

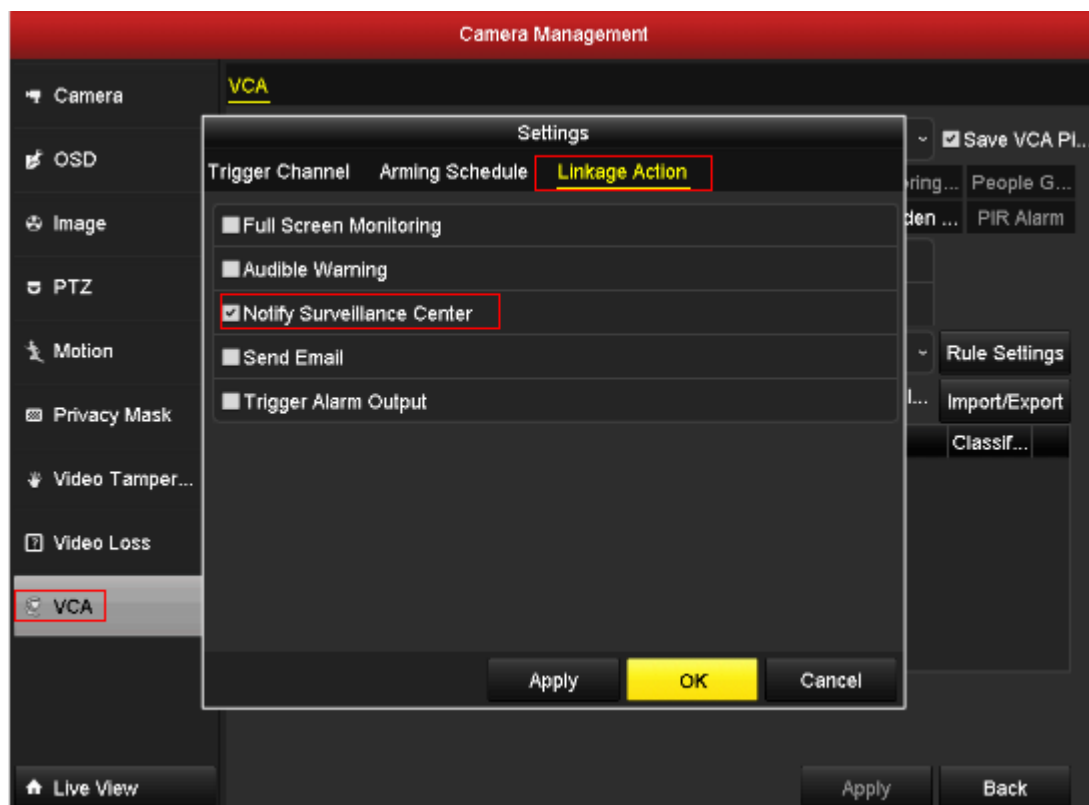
Go to **Menu->Camera->VCA->Rule Settings**, choose the **Lane number** as you want.



Go to **VCA->Picture** and **VCA->Overlay Content**, configure the parameter as follows.



Go to **VCA->Others**, configure the **Trigger channel/Arming Schedule** and set the **Linkage Action** as follows.

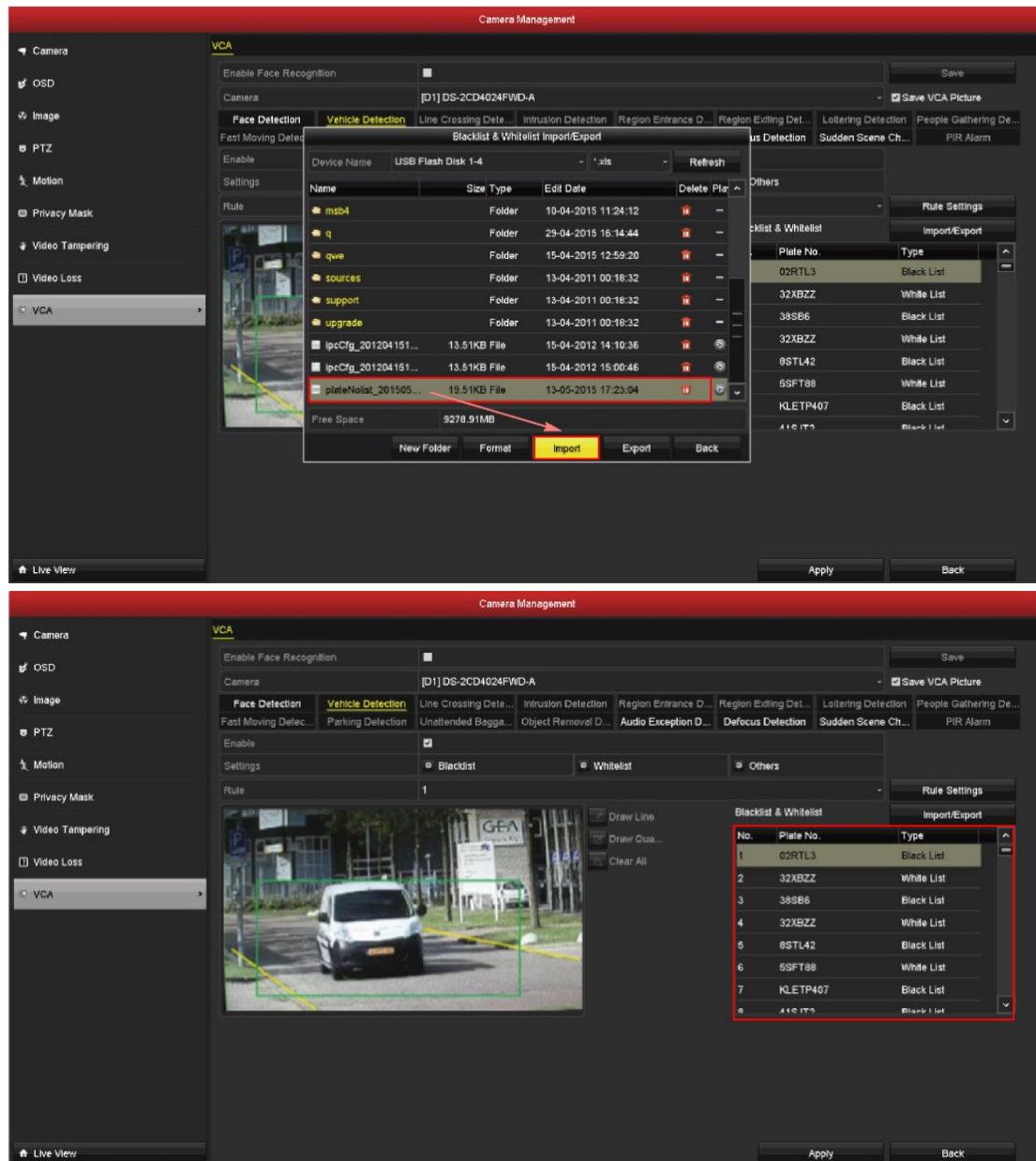


2.2.3 Blacklist and Whitelist management.

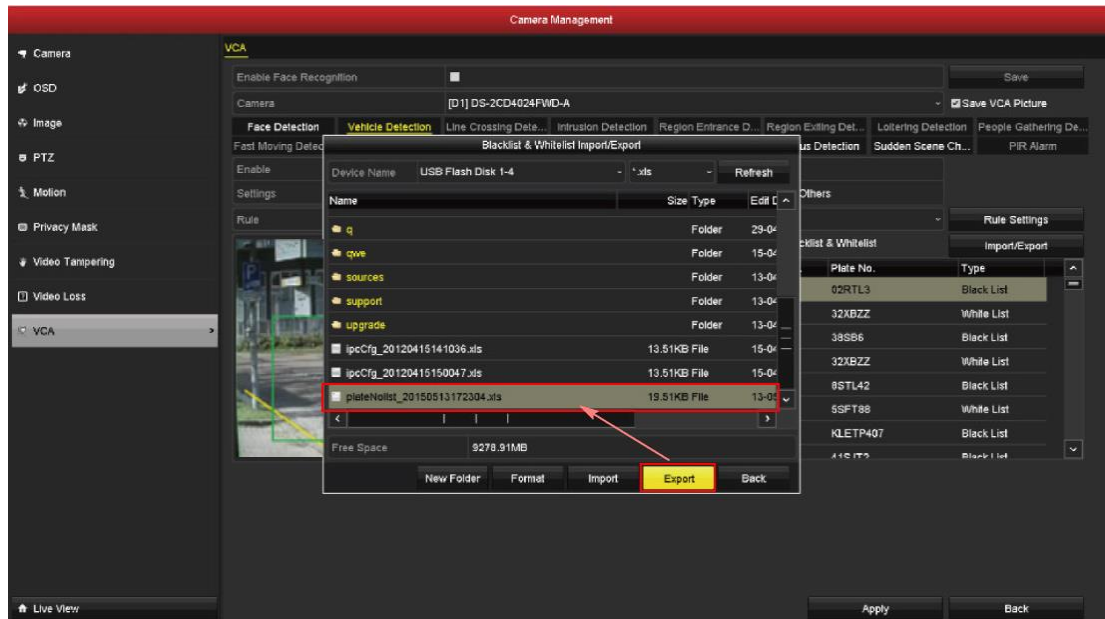
Edit the Blacklist and Whitelist file (let's say black-white.xls) on computer as follows, copy the file to a USB storage device.

	A	B	C
1	No	Plate Num	Group(0 black list, 1 white list)
2	1	02RTL3	0
3	2	32XBZZ	1
4	3	38SB6	0
5	4	32XBZZ	1
6	5	8STL42	0
7	6	5SFT88	1
8	7	KLETP407	0
9	8	41SJT2	0
10	9	7VLP4F	0
11	10	4VTG19	0
12	11	7558H	0
13	12	8KNZ92	0
14	13	42NSNF	0
15	14	VF034P	0
16	15	08BNBF	0
17	16	5OPFT	0

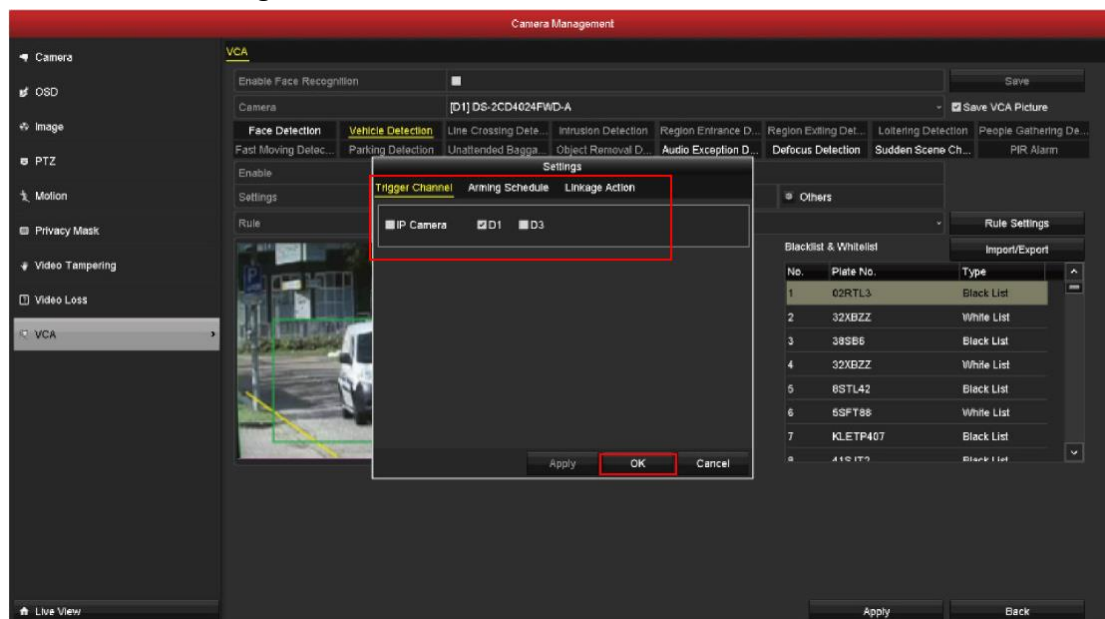
Connect the USB storage device to the NVR. Go to **VCA->Import/Export**, import the Blacklist and Whitelist as follows.



Connect the USB storage device to the NVR. Go to **VCA->Import/Export**, export the Blacklist and Whitelist as follows. You can edit the file on computer.

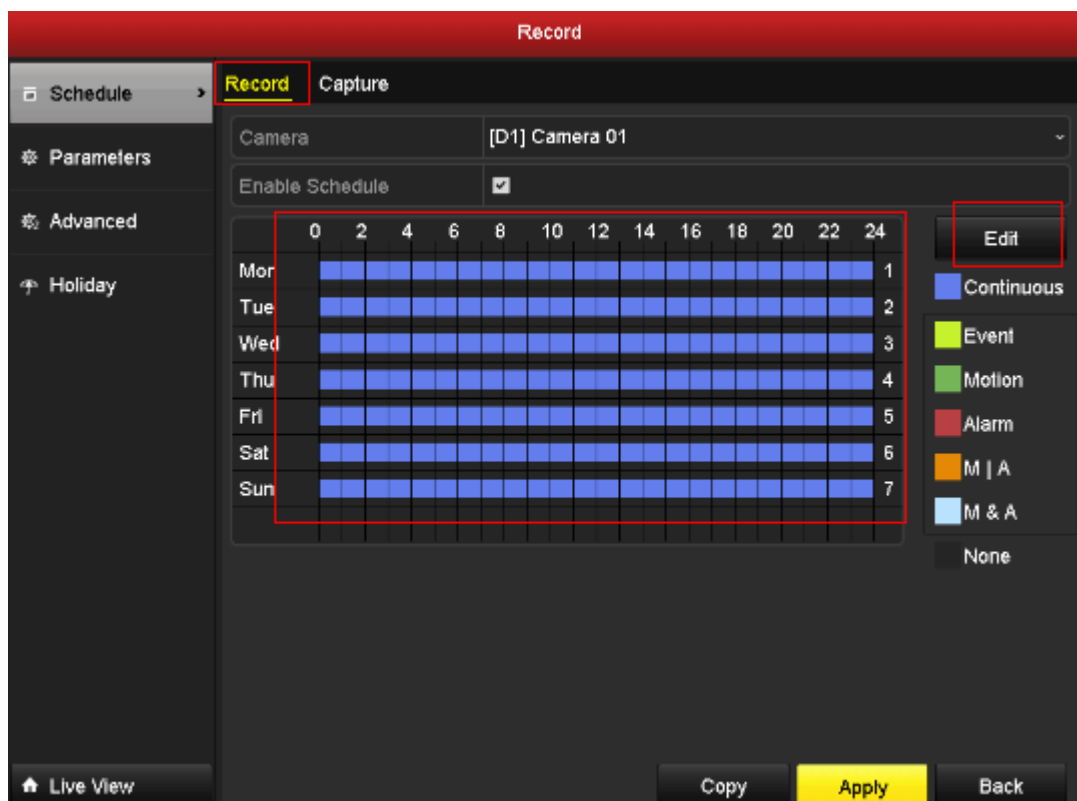
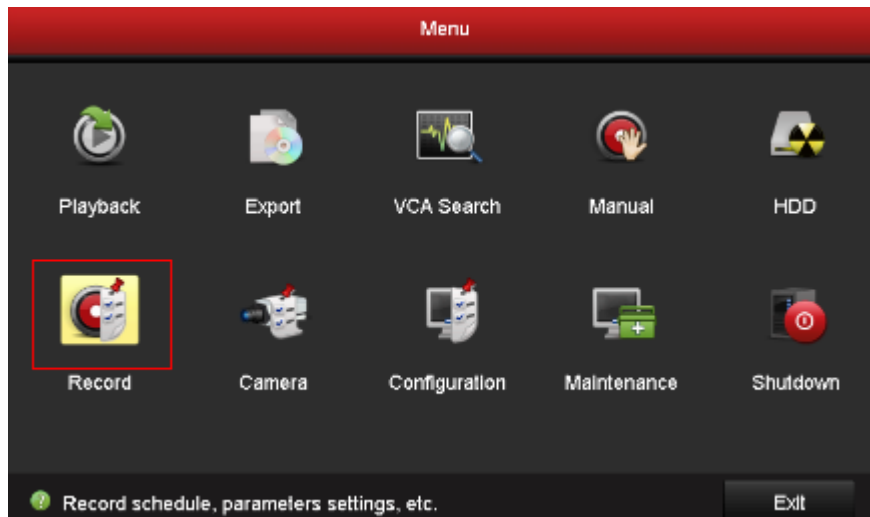


Go to **VCA->Blacklist/ Whitelist/ Others**, configure the Trigger Channel, Arming Schedule and Linkage Actions for the Blacklist, Whitelist and Others.



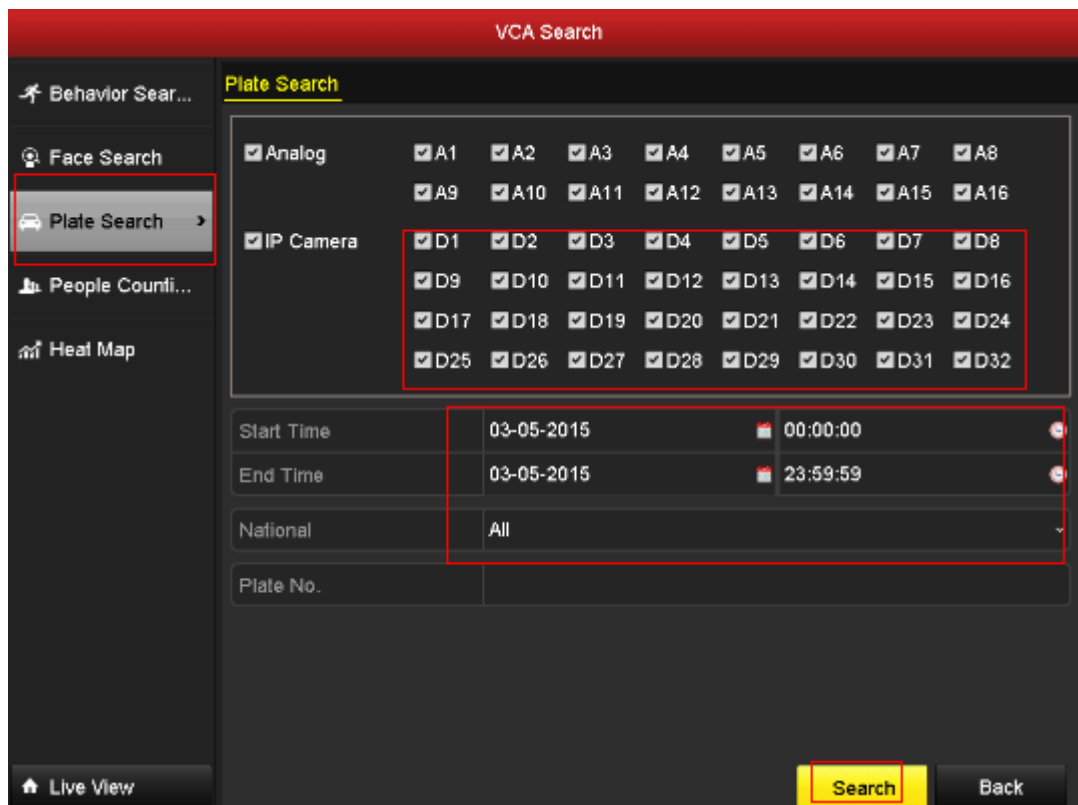
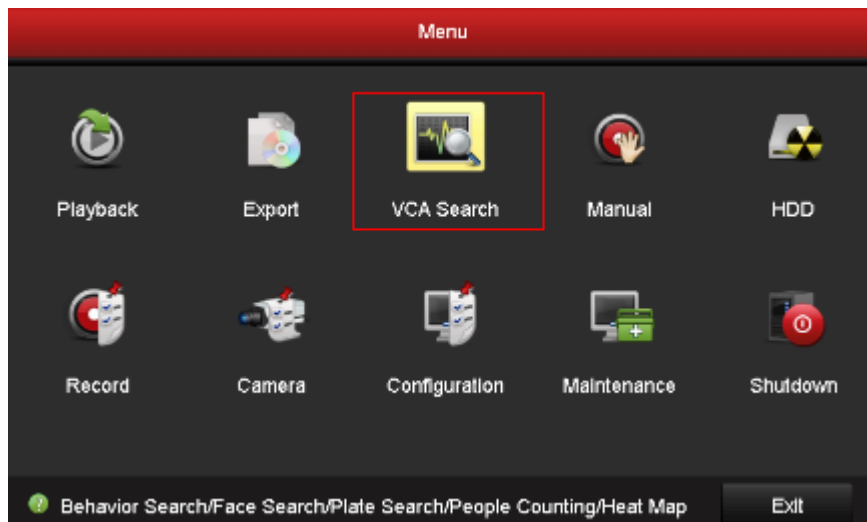
2.2.4 Record Schedule

In sake of saving the video clip more accurately, users need to configure the record schedule on local NVRs. Please see the detailed configuration below.



3 Result Query

Go to **Menu ->VCA Search->Plate Search**, select the channel and start/stop time, users can search the plate info on the local NVR. Please see the details below.



Chart

List

Plate Search

All

4-VIG-19

01-02-2015 04:10:10

75-001P

01-02-2015 04:09:50

42-NS-NE

01-02-2015 04:11:50

VF-034-P

01-02-2015 04:10:24

16-BS-PT

01-02-2015 04:10:17

4LE-1P-00

01-02-2015 04:09:30

2-VPV-26

01-02-2015 04:09:48

10-VW-24

01-02-2015 04:09:33

68-JK-KT

01-02-2015 04:10:27

17-03-18

01-02-2015 04:09:30

19-ZSH-3

01-02-2015 06:06:11

22-RB-TG

01-02-2015 06:06:10

83-RGF-5

01-02-2015 06:06:14

03-ZG-HK

01-02-2015 06:06:23

4-VIG-19

01-02-2015 05:33:21

3-SXZ-34

01-02-2015 06:00:24

02-KL-0

01-02-2015 05:04:19

02-KL-0

01-02-2015 06:04:17

02-KL-0

01-02-2015 05:34:44

Total: 1668 P: 23/64

◀

▶

↺

↻

⏮

⏭

4VTG19

Filter

Country: Netherlands

◀

▶

↺

↻

⏮

⏭

Picture

Record

Statistical Information

Export All

Export

Back