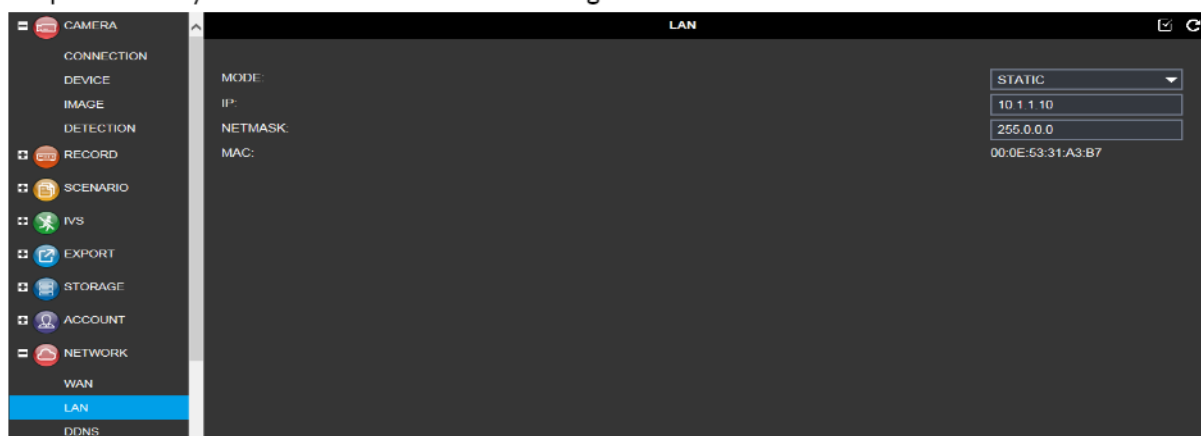
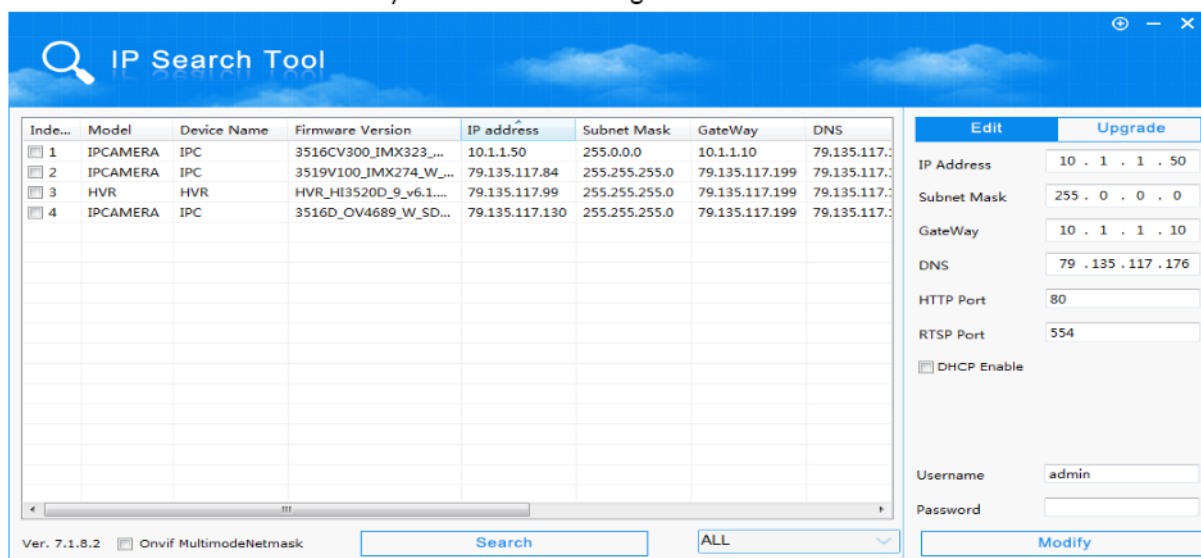


Adding 3rd party cameras to Avtech NVR

- 1) On the NVR, go to the "MENU" then go to "LAN", once here select "STATIC" from the dropdown and you should have the below settings.



- 2) Plug your laptop into the switch that the cameras are also plugged into. Now run the IPC Search tool. Select "ALL" in the bottom right and change this to "IPC" and click search. This will show the IP addresses of any IP cameras showing on the network.



- 3) Now select a camera, untick the "DHCP Enable" button so you can manually change the IP.

IP Address: 10.1.1.X

Subnet Mask: 255.0.0.0

GateWay: 10.1.1.10

DNS: 8.8.8.8

HTTP Port: 80

RTSP Port: 554

Username: admin

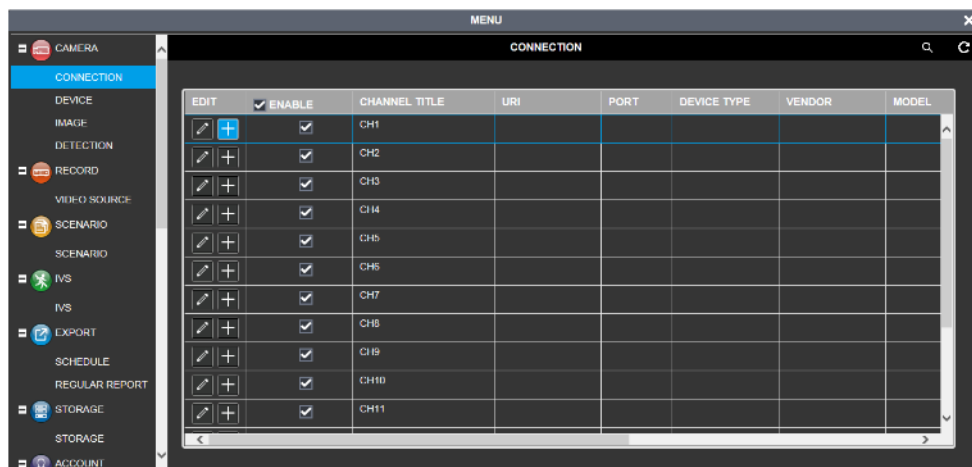
Password: admin

For each camera, the ending IP address will need to be different. For example:

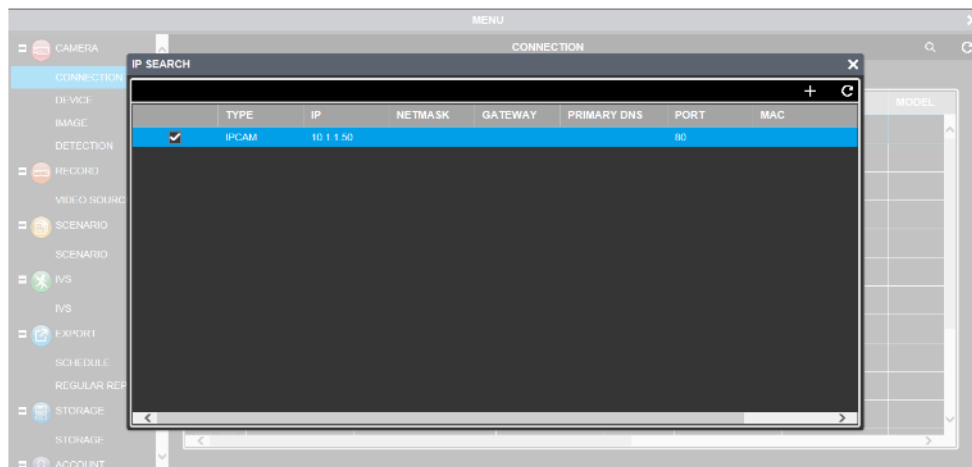
Camera 1 – 10.1.1.50

Camera 2 – 10.1.1.51

- 4) Now select the “+” button beside the camera and it will search for all the cameras on the LAN.



Select the camera using the tick box to the right hand side; it may prompt you for username and password. Now type in “admin” for the username and password then press apply. Once done, back out of the menu then click “add”



This will now show the camera in the connection screen and it will be displaying on the live view.

